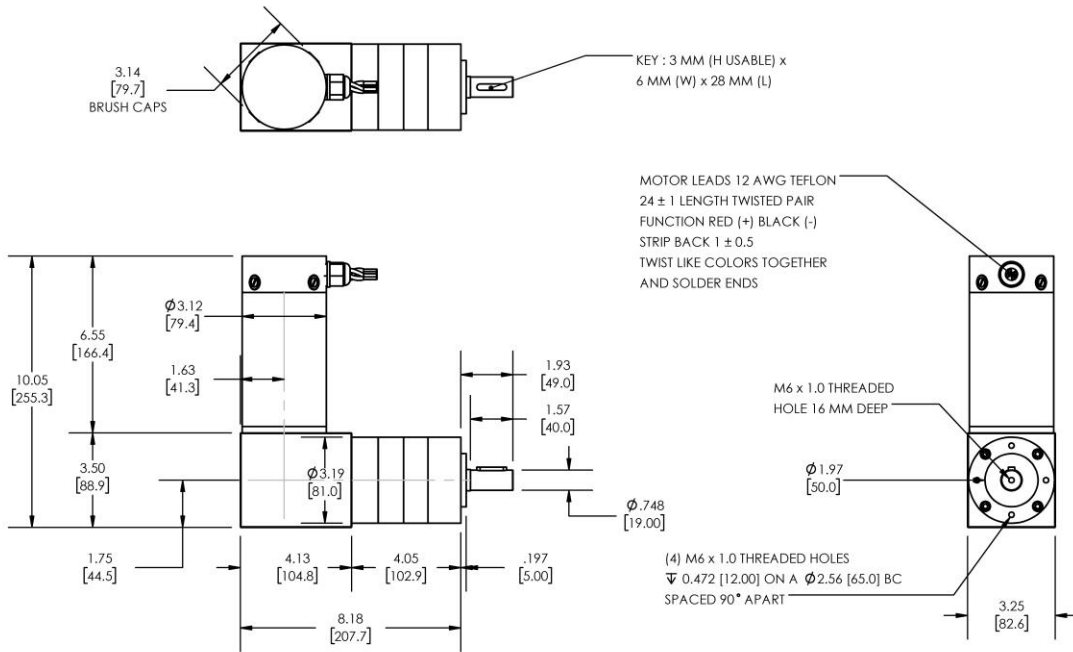


**Model Number:**

## MMP D33-655C-24V GRA81-079



DIMENSIONS ARE INCHES [MM] UNLESS OTHERWISE STATED

PLANETARY GEARMOTOR OUTPUT PARAMETERS:	VALUE	UNITS	TOLERANCE
Gearhead Ratio (exact)	78.71 : 1		
Gearhead Shaft Output Speed (at full-load)	38	RPM	MAX
Gearmotor Rated Continuous Torque	475	In-Lbs	MAX
Gearmotor Rated Peak Torque	<b>2124++</b>	In-Lbs	----
Gearhead Standard Backlash	36	Arc Minutes	MAX
Gearhead Efficiency	70%	----	----
Output Shaft Radial Load Capacity	225	Lbs	MAX
Output Shaft Axial Load Capacity	45	Lbs	MAX
Gearmotor Total Weight	18	Lbs	MAX

**++ All Peak Torque values are dependent upon duty. Contact our sales office for details.**

DC MOTOR PERFORMANCE PARAMETERS:	VALUE	UNITS	TOLERANCE
Rated DC Voltage	24	DC VOLTS	----
Rated Continuous Current	15.5	AMPERES	----
No-Load Speed	3380	RPM	MAX
Rated Speed	2981	RPM	+/- 15%
Rated Continuous Power Out	304	WATTS	+/- 15%
Rated Continuous Torque	138	OZ-IN	----
Peak Torque (motor only)	841	OZ-IN	----
No-Load Current	1.12	AMPERES	MAX
Back EMF Constant (Ke)	7.1	V/KRPM	+/- 10%
Torque Constant (Kt)	9.6	OZ-IN/AMP	+/- 10%
DC Armature Resistance	0.18	OHMS	+/- 15%
Armature Inductance	0.14	mH	+/- 15%
Armature temperature	155	DEG. C	MAX

**NOTES:**

- ENCODER & BRAKE OPTIONS AVAILABLE – [FOLLOW THIS LINK FOR DETAILS](#)
- NEMA MOUNTING FLANGE OPTION AVAILABLE – [FOLLOW THIS LINK FOR DETAILS](#)